

RECORDERS

LUMEL

Paperless recorder (data logger) with touch screen

For basic applications

KD8



IP65

No operating costs

Paperless recorder (data logger) with touch screen and Ethernet

For advanced applications

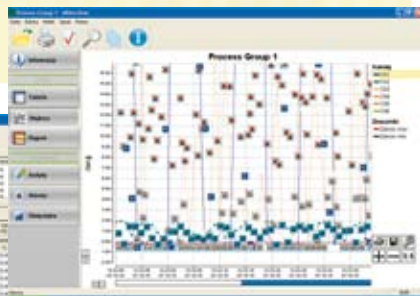
KD7



IP65

Main features:

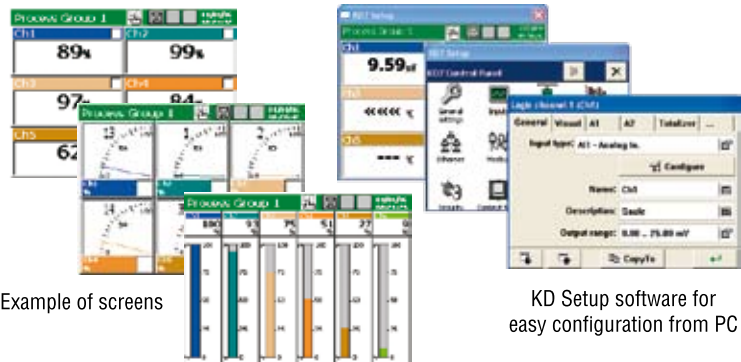
- LCD TFT 5.7" touch-screen, 320x240px
- data logging on CompactFlash card – memory up to 4GB
- 3 or 6 analog measuring channels (for RTDs, TCs and standard signals)
- 6 or 12 alarms and 4 or 8 digital inputs (start/stop of recording, next/previous screen)
- 4 or 8 analog outputs
- RS232, RS485 and USB interfaces
- FDA certificate
- editable operator's messages
- Windows® CE based user friendly interface in 7 languages



KD Archive software for KD7 and KD8 for visualization and printout of data obtained from the recorder

Main features:

- LCD TFT 5.7" touch-screen, 320x240px
- data logging on CompactFlash card – memory up to 4GB
- 3, 6, 9 or 12 analog measuring channels (for RTDs, TCs and standard signals)
- 16 or 32 alarms and 8 or 16 digital inputs (controls: start/stop of recording, next/previous screen)
- 4 or 8 analog outputs
- additional inputs and outputs via external modules and transducers
- web server, Modbus TCP, mathematical functions
- RS232, 2xRS485, Ethernet and USB interfaces
- FDA certificate
- editable operator's messages
- Windows® CE based user friendly interface in 7 languages



Example of screens

KD Setup software for easy configuration from PC

Paper recorders



1-channel programmable pen recorder with printer and RS485 interface

KR7



3-channel pen recorder with event markers, alarms and signal retransmission

KR5A



6-channel programmable dot recorder with alarms and RS485 interface

KE8

IP65

Fields of application in various industrial branches:

- food industry (HACCP systems)
- pharmaceutical industry
- power industry (water, solar or wind power stations)
- chemical industry
- breweries and distilleries
- water supply and sewages (pumping stations, water conditionings and treatment plants)
- drying chambers (paint shops, wood drying chambers)
- wood industry

ALL RECORDERS can cooperate with additional different devices which can measure for example:



(20mA, 10V, PT100) – meters and converters



- transducer P18



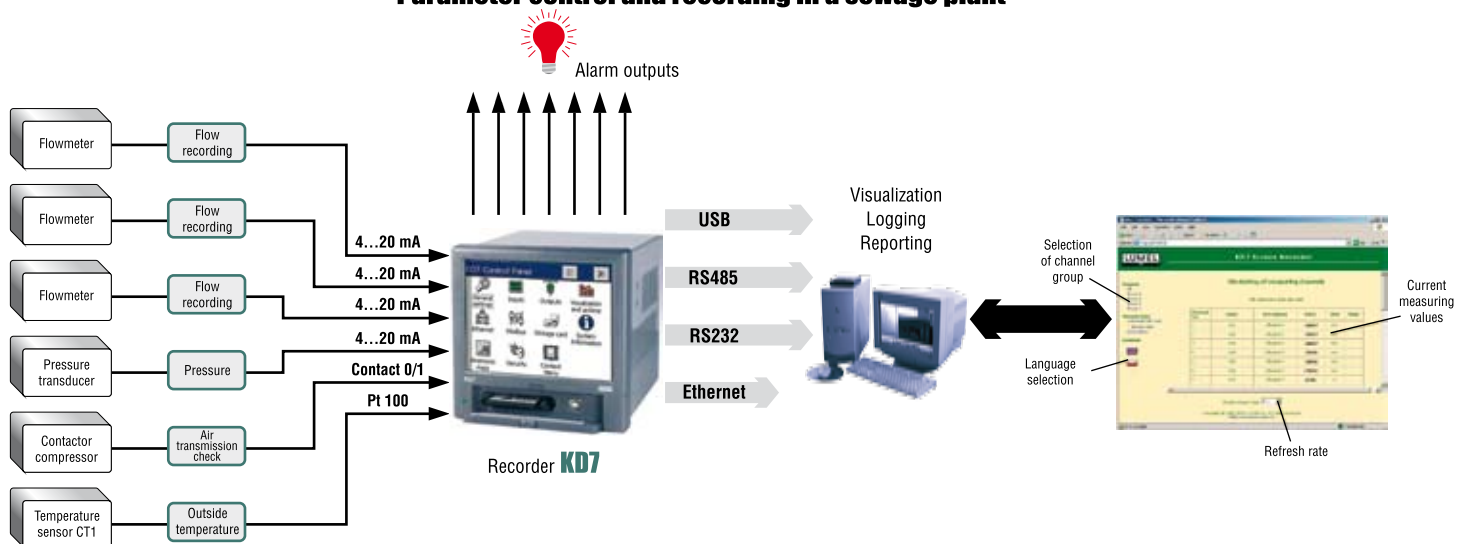
– converters and counters (SM modules) - KD7 only



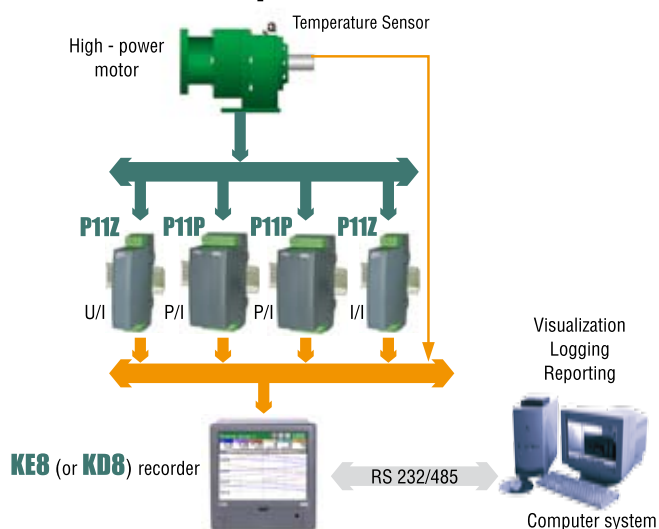
– network parameters (transducers, analyzers)

APPLICATIONS

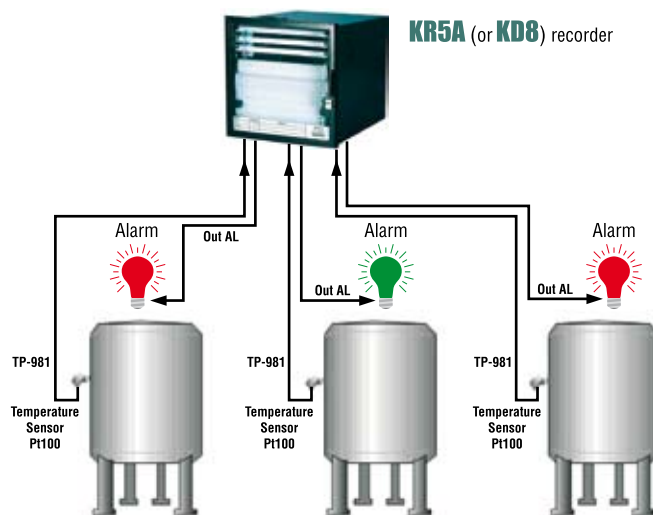
Parameter control and recording in a sewage plant



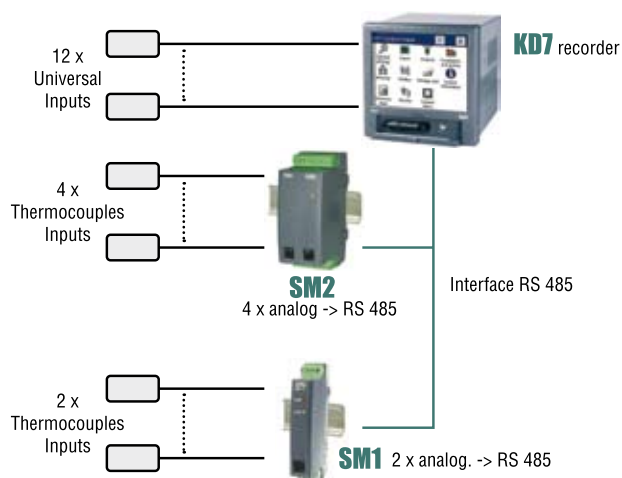
Measurement and visualization of motor working parameters (temperature and motor load)



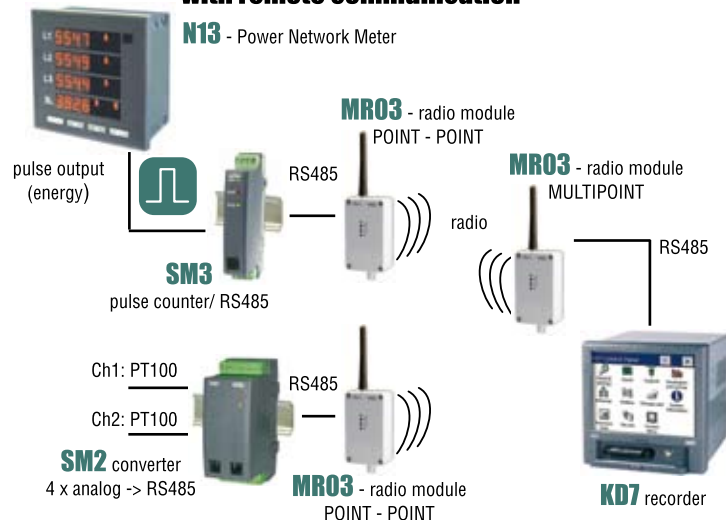
Temperature measurement, logging and alarming



System of temperature measurement in 18 points: 12 directly to KD7, 6 via SM1, SM2 RS485 converters



System of temperature and energy measurement with remote communication



COME AND SEE US!

We also offer: analog meters, digital meters, large-size displays, power network parameter analysers, measuring transducers, industrial process controllers, recorders, power controllers, solid state relays, elements of integration systems, synchronizing units, electronic watt-hour meters, shunts.

PLEASE CONTACT US:

Export Sales Department: email: export@lumel.com.pl, tel: +48 68 32 95 -302, (or: -321, -233, -139, -305), fax: +48 68 32 40 091

WWW.LUMEL.COM.PL